


These lighting calculations are not a substitute for an independent engineering analysis of lighting system suitability and safety.


Statistics

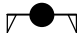
	Average	Maximum	Minimum	Max/Min	Avg/Min
SOCCER	30.4	37.5	20.6	1.8	1.5

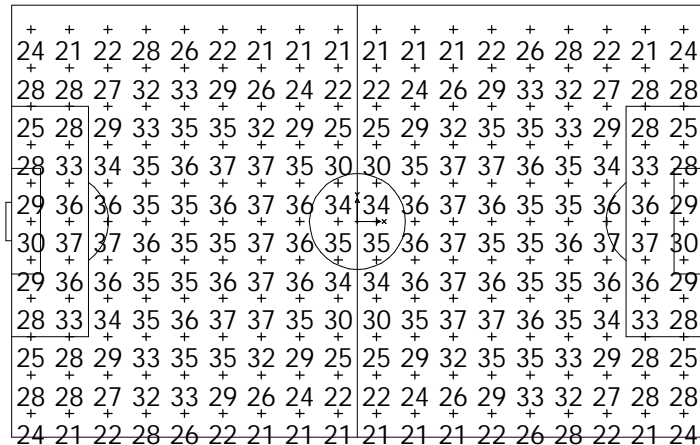
Luminaire Schedule

Symbol	Qty	Catalog No.	Lamp	Initial Lumens
N	48	ASPX5M GN	MH1500/BU-HOR	151900

A2  (-180, 192)

B1  (0, 192)

A1  (180, 192)




Notes


- 1) Levels shown are maintained horizontal illuminance.
- 2) Based on a light loss factor of .80
- 3) Results are shown in units of footcandles.
- 4) Levels shown are taken 3 Feet above grade.
- 5) Includes effects of lamp operating position.
- 6) EPA does not include bracketry
- 7) Levels based on rated input voltage supplied to ballast

Luminaire Legend

Pole	Quantity	EPA[FT SQ]	Power[KVA]	Height
A1	8	26.4	12.88	90
A2	8	26.4	12.88	90
A3	8	26.4	12.88	90
A4	8	26.4	12.88	90
B1	8	26.4	12.88	90
B2	8	26.4	12.88	90

A4  (-180,-193)

B2  (0,-193)

A3  (180,-193)

Drawing Number:	Drawn By:
SCC631AS	Approved:
Sheet 1 of 1	Date: 10/13/03
	Scale: 1 Inch = 100 Feet

TYPICAL 225 X 360 SOCCER FIELD
6 POLE 30FC LAYOUT