

## Statistics

	Average	Maximum	Minimum	Max/Min	Avg/Min
SOCCER	30.2	38.9	19.8	2	1.5



One Lithonia Way Conyers, GA 30012

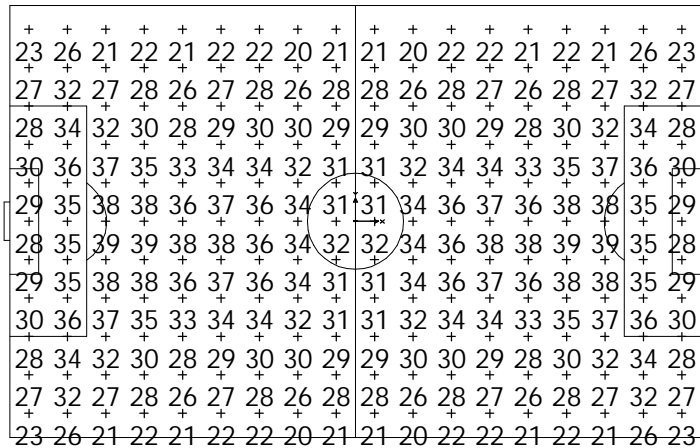
These lighting calculations are not a substitute for an independent engineering analysis of lighting system suitability and safety.

## Luminaire Schedule

Symbol	Qty	Catalog No.	Lamp	Initial Lumens
N	40	ASPX5M GN	MH1500/BU-HOR	151900
M	8	ASPX5M GM	MH1500/BU-HOR	151900

**A2** (-90, 192)

**A1** (90, 192)



## Notes

- 1) Levels shown are maintained horizontal illuminance.
- 2) Based on a light loss factor of .80
- 3) Results are shown in units of footcandles.
- 4) Levels shown are taken 3 Feet above grade.
- 5) Includes effects of lamp operating position.
- 6) EPA does not include bracketry
- 7) Levels based on rated input voltage supplied to ballast

## Luminaire Legend

Pole	Quantity	EPA[FT SQ]	Power[KVA]	Height
A1	12	39.6	19.32	90
A2	12	39.6	19.32	90
A3	12	39.6	19.32	90
A4	12	39.6	19.32	90

**A4** (-90,-193)

**A3** (90,-193)

Drawing Number:	Drawn By:
SCC431AS	Approved:
Sheet 1 of 1	Date: 10/13/03
	Scale: 1 Inch = 100 Feet

**TYPICAL 225 X 360 SOCCER FIELD**  
4 POLE 30FC LAYOUT