


**Statistics**


	Average	Maximum	Minimum	Max/Min	Avg/Min
SOCCER	20.9	24.8	13.4	1.9	1.6


These lighting calculations are not a substitute for an independent engineering analysis of lighting system suitability and safety.

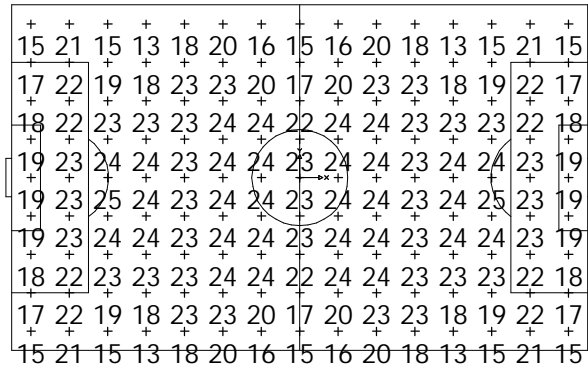
**Luminaire Schedule**

Symbol	Qty	Catalog No.	Lamp	Initial Lumens
N	16	ASPX5M GN	MH1500/BU-HOR	151900
M	8	ASPX5M GM	MH1500/BU-HOR	151900

**A2**   
(-150, 170)

**B1**   
( 0, 170)

**A1**   
( 150, 170)





**Notes**


- 1) Levels shown are maintained horizontal illuminance.
- 2) Based on a light loss factor of .80
- 3) Results are shown in units of footcandles.
- 4) Levels shown are taken 3 Feet above grade.
- 5) Includes effects of lamp operating position.
- 6) EPA does not include bracketry
- 7) Levels based on rated input voltage supplied to ballast

**Luminaire Legend**

Pole	Quantity	EPA[FT SQ]	Power[KVA]	Height
A1	4	13.2	6.44	80
A2	4	13.2	6.44	80
A3	4	13.2	6.44	80
A4	4	13.2	6.44	80
B1	4	13.2	6.44	80
B2	4	13.2	6.44	80

**A4**   
(-150,-170)

**B2**   
( 0,-170)

**A3**   
( 150,-170)

Drawing Number:	Drawn By:
SCB621AS	Approved:
Sheet 1 of 1	Date: 10/13/03
	Scale: 1 Inch = 100 Feet

**TYPICAL 180 X 300 SOCCER FIELD**  
6 POLE 20FC LAYOUT