

Statistics

	Average	Maximum	Minimum	Max/Min	Avg/Min
SOCCER	50.1	59.8	41.1	1.5	1.2



One Lithonia Way Conyers, GA 30012

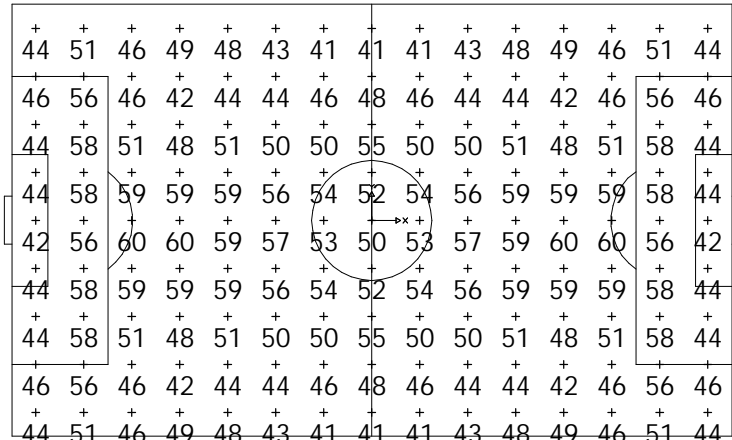
These lighting calculations are not a substitute for an independent engineering analysis of lighting system suitability and safety.

Luminaire Schedule

Symbol	Qty	Catalog No.	Lamp	Initial Lumens
M	36	ASPX5M GM	MH1500/BU-HOR	151900
W	20	ASPX5M GW	MH1500/BU-HOR	151900

A2 (-75, 120)

A1 (75, 120)



A4 (-75,-120)

A3 (75,-120)

Notes

- 1) Levels shown are maintained horizontal illuminance.
- 2) Based on a light loss factor of .80
- 3) Results are shown in units of footcandles.
- 4) Levels shown are taken 3 Feet above grade.
- 5) Includes effects of lamp operating position.
- 6) EPA does not include bracketry
- 7) Levels based on rated input voltage supplied to ballast

Luminaire Legend

Pole	Quantity	EPA[FT SQ]	Power[KVA]	Height
A1	14	46.2	22.54	60
A2	14	46.2	22.54	60
A3	14	46.2	22.54	60
A4	14	46.2	22.54	60

Drawing Number:	Drawn By:
SCB453AS	Approved:
Sheet 1 of 1	Date: 10/13/03
	Scale: 1 Inch = 80 Feet

TYPICAL 180 X 300 SOCCER FIELD
4 POLE 50FC LAYOUT