

## Statistics

	Average	Maximum	Minimum	Max/Min	Avg/Min
SOCCER	21.7	29.5	12.4	2.4	1.7



One Lithonia Way Conyers, GA 30012

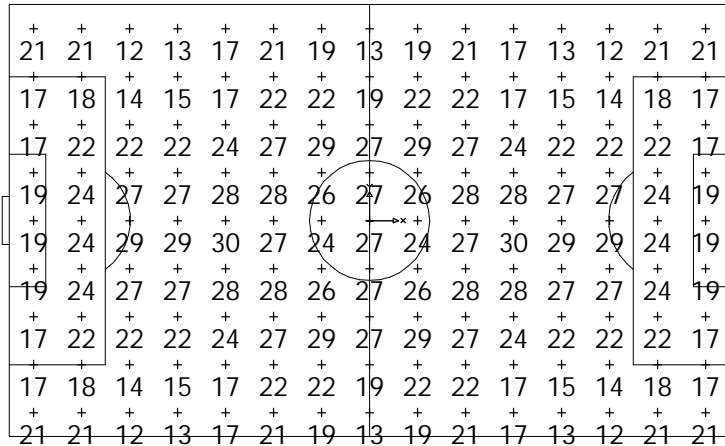
These lighting calculations are not a substitute for an independent engineering analysis of lighting system suitability and safety.

## Luminaire Schedule

Symbol	Qty	Catalog No.	Lamp	Initial Lumens
N	20	ASPX5M GN	MH1500/BU-HOR	151900
M	4	ASPX5M GM	MH1500/BU-HOR	151900

**A2** (-75, 150)

**A1** ( 75, 150)



## Notes

- 1) Levels shown are maintained horizontal illuminance.
- 2) Based on a light loss factor of .80
- 3) Results are shown in units of footcandles.
- 4) Levels shown are taken 3 Feet above grade.
- 5) Includes effects of lamp operating position.
- 6) EPA does not include bracketry
- 7) Levels based on rated input voltage supplied to ballast

## Luminaire Legend

Pole	Quantity	EPA[FT SQ]	Power[KVA]	Height
A1	6	19.8	9.66	70
A2	6	19.8	9.66	70
A3	6	19.8	9.66	70
A4	6	19.8	9.66	70

**A4** (-75,-150)

**A3** ( 75,-150)

Drawing Number:	Drawn By:
SCB422AS	Approved:
Sheet 1 of 1	Date: 10/13/03
	Scale: 1 Inch = 80 Feet

**TYPICAL 180 X 300 SOCCER FIELD**  
4 POLE 20FC LAYOUT